

Claude AI: Strategic Opportunity Analysis for Individuals

This presentation comprehensively examines the strategic opportunities that Claude AI, developed by Anthropic, creates for individual users. From academic development to entrepreneurship, career management to independent platform building, the value proposition offered by Claude AI is analyzed across a broad range of applications.

The Scope and Goals of This Presentation

This presentation addresses the strategic opportunities created by artificial intelligence technology for individuals within a concrete framework. Beyond a technology introduction, this is a comprehensive opportunity analysis of how individuals can shape their own career and entrepreneurial journeys.

01

Claude AI's Capabilities

Claude AI's technical capabilities developed by Anthropic and its position in the business world.

03

Entrepreneurship and Value Creation

Practical methods ranging from idea generation to platform building, from developing business plans to designing revenue models.

02

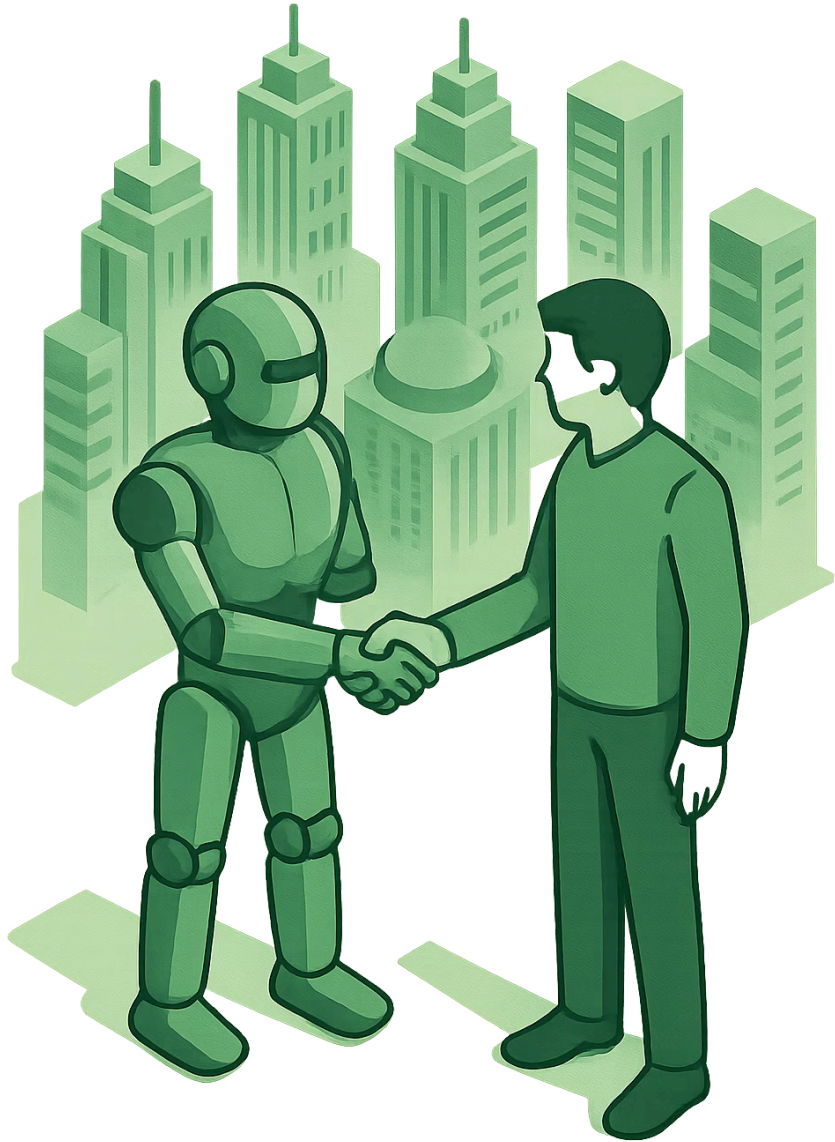
Target Audience and Use Cases

Concrete application areas across a broad range, from high school students to corporate professionals.

04

Strategic Action Plan

Steps that can be implemented starting today and a sustainable growth roadmap.



Global Transformation: Positioning in the Age of Artificial Intelligence

When the historical process is examined, every major technological revolution has provided disproportionate advantages to early adopters. **Printing, electricity, internet** — in every paradigm shift, those who took the lead achieved long-term competitive advantage. The AI revolution is on track to become the most comprehensive of these transformations, and the window is still open.

Rise of AI-Powered Entrepreneurship: Key Indicators

Artificial intelligence technology is fundamentally transforming the company formation and growth processes of individual entrepreneurs. The data below concretely illustrates the scale and pace of this transformation:

300%

Faster Growth

Solo entrepreneurs using AI tools are achieving on average 3 times faster growth compared with equivalent businesses founded through traditional methods.

\$1M+

One-Person Companies

The number of one-person companies founded by AI-powered solo entrepreneurs and reaching annual revenue above 1 million dollars is increasing exponentially every year.

\$4.8T

Size of the AI Economy

According to Goldman Sachs research, the global AI economy is projected to reach a market size of 4.8 trillion dollars annually by 2030. This is one of the fastest-growing economic sectors in history.

2026

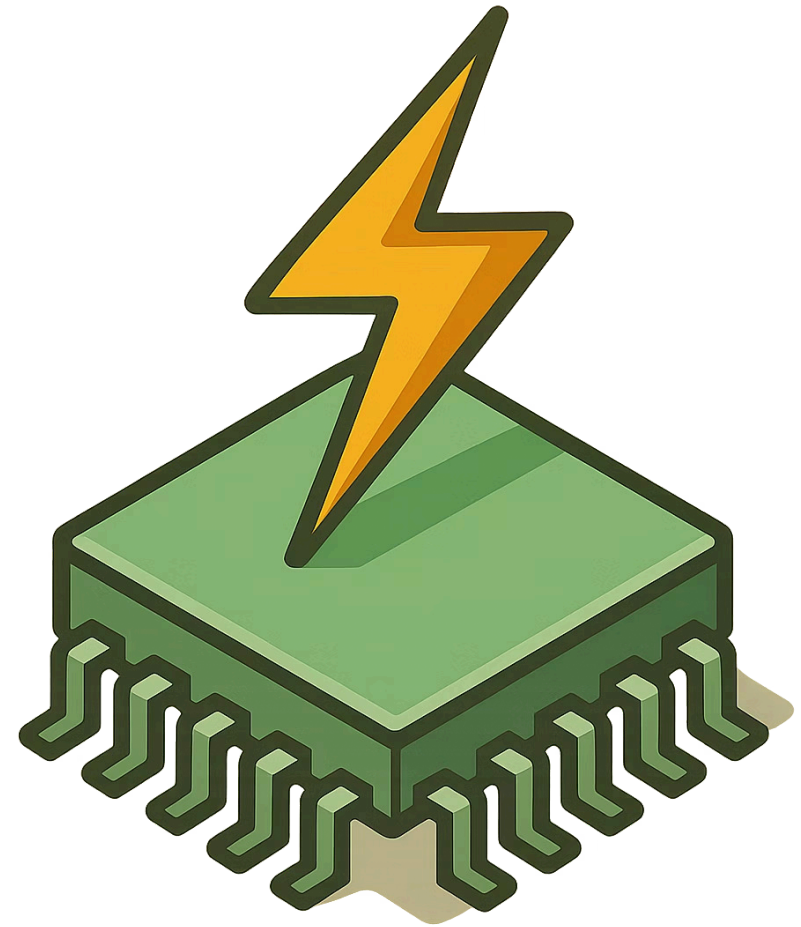
Transformation Threshold

Analysts predict that by 2026, the vast majority of newly founded startups will be structured as AI-powered solo or micro-team ventures.

Competitive Advantage: The Strategic Edge of Early Adopters

In technological transformation processes, timing is one of the most critical determinants of competitive advantage. Individuals and organizations that integrate AI tools into their workflows early gain a lasting edge in efficiency, capacity, and market positioning.

Claude AI is currently available to individual users at an accessible price point. This window will not remain open forever; as competition intensifies, the advantage of early adopters will become increasingly clear.



Claude AI: Architecture, Capacity, and Differentiated Value Proposition

About Claude AI

Claude AI, developed by Anthropic, is one of the most advanced large language models today. It does not merely provide information; it functions as an effective partner in analytical thinking, strategy development, and content creation processes. It has the capacity to produce high-quality output in dozens of languages, including Turkish.

Claude's performance in processing long contexts, solving complex tasks in a structured way, and producing nuanced content compared with earlier versions makes it especially valuable for both corporate and individual use.

Core Capabilities

- Deep analysis: Quickly analyzes and synthesizes comprehensive documents, reports, and data sets
- Strategic content creation: Prepares business plans, marketing copy, academic writing, and corporate reports
- Software development support: Speeds up code writing and debugging processes
- Strategy and planning: Develops business models, performs competitive analysis, and creates roadmaps
- Education and knowledge transfer: Explains complex concepts in a structured and understandable way
- Research assistance: Supports academic and business research processes

SECTION 1

Claude AI for High School Students: Academic Growth and Entrepreneurial Capacity

High school is a critical stage in which an individual's intellectual foundation and career direction begin to take shape in broad terms. For students attending high school in the United States, Claude AI offers an enterprise-level thinking partner tailored to each student's pace and goals across a wide range of needs, from SAT/ACT preparation and AP exams to college application processes and first entrepreneurial experiences.



Use Cases for High School Students



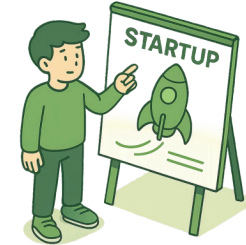
Academic Productivity and Project Development

Claude AI not only provides information during homework and project work; it helps you approach the topic in a structured way, strengthen your arguments, and improve academic quality. It serves as an in-depth thinking partner in areas such as AP classes, research projects, and essay writing.



SAT/ACT and University Application Preparation

During preparation for the SAT, ACT, and AP exams, Claude AI offers a personalized learning experience that adapts to the student's level and pace. It solves math and reading sections step by step, identifies conceptual gaps, and also serves as a strong guide in improving university application essays.



First Entrepreneurship Experience

In the high school years in America, entrepreneurship has now become an accessible goal. With Claude AI, processes such as developing a business idea, target audience analysis, basic marketing strategy, and creating an initial revenue model can be carried out systematically. Ventures that start as school projects can turn into real business models.

Concrete Application Examples for High School Students

Claude AI provides measurable value to high school students at every stage of academic and entrepreneurial processes. Below are concrete application examples that can be implemented today:

SAT/ACT Subject Study

Work through the topics you do not understand in the math, reading, and writing sections step by step with Claude. Improve your exam performance with personalized explanations and practice questions.

University Application Essay

Develop your Common App and university-specific essays with Claude. Create a strong narrative structure, an original voice, and an impactful opening sentence.

AP Course Support

Identify conceptual gaps in courses such as AP History, AP English, and AP Calculus. Prepare topic summaries, practice questions, and essay drafts with Claude.

Your First Digital Product or Service

Design your first revenue model with Claude in areas such as an Etsy shop, digital design services, or social media content creation. Create product descriptions, pricing strategy, and a marketing plan.

School Club or Project Presentation

Use Claude to manage the research, presentation, and argument development processes for Model UN, Science Fair, or school entrepreneurship competitions.

Personal Brand and LinkedIn Profile

Create a professional digital profile in preparation for university applications and internship opportunities. Develop a bio, project descriptions, and recommendation letters with Claude.



SECTION 2

Claude AI for University Students: From Academic Excellence to Entrepreneurship

University is the most critical stage where academic identity and professional competencies take shape. During this process, individuals who effectively use the right tools enter the workforce after graduation with a clear competitive advantage. Claude AI offers a strategic support mechanism at every stage of this process.

Strategic Application Areas for University Students

Academic Research and Thesis Processes

Claude AI provides effective support in synthesizing academic information, narrowing down thesis topics, and creating section-by-section writing structures. It organizes literature reviews, strengthens arguments, and raises academic writing standards. The thesis process can be managed in a more structured and manageable way.

Career Applications and Professional Profile Development

To create a competitive profile in internship and job applications, you can prepare institution-specific cover letters, a strong resume, and LinkedIn profile content with Claude AI. Personalizing each application according to the expectations of the target institution clearly distinguishes the candidate from competitors.

Startup Development and Business Plan Creation

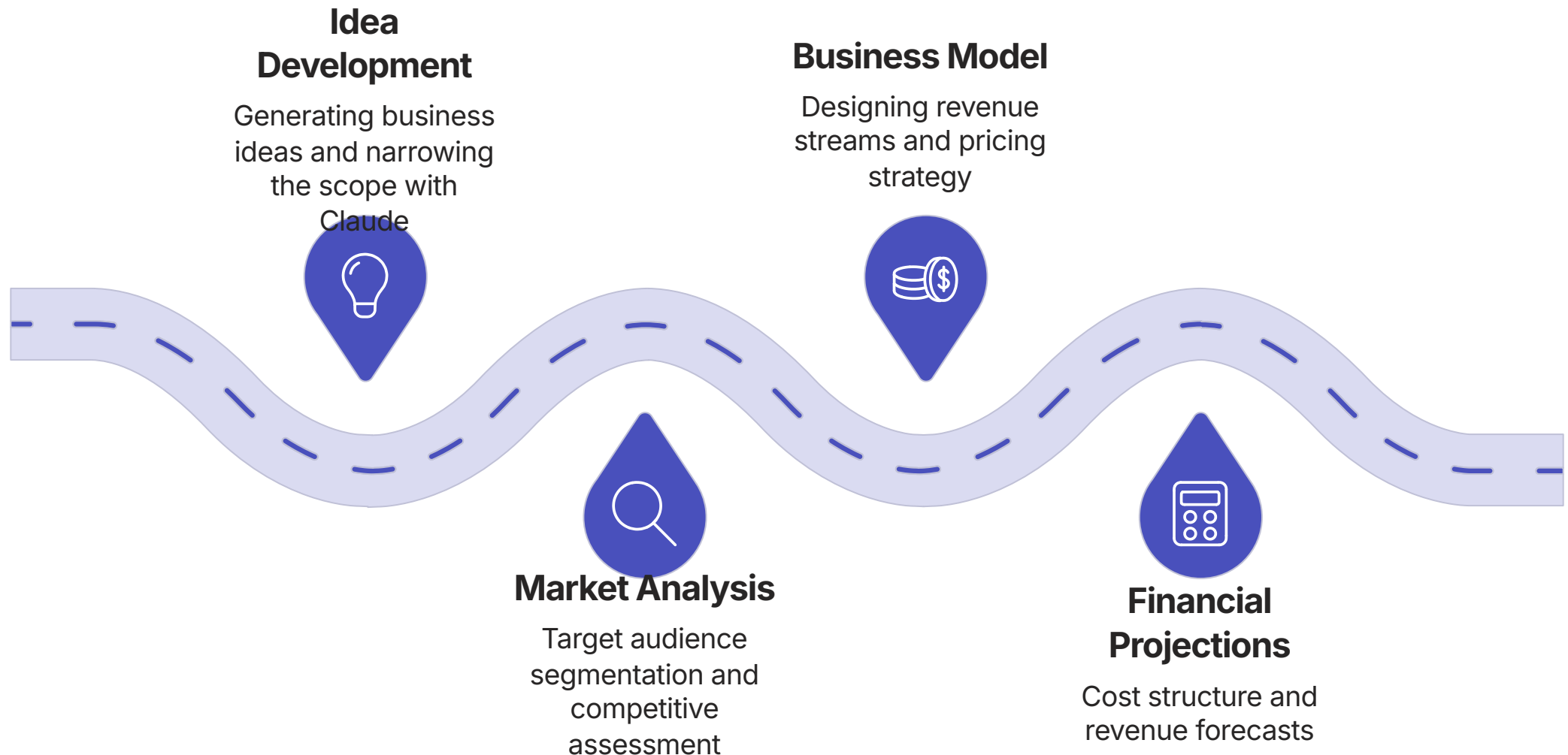
A startup idea aimed at solving a problem identified in your department can be systematically developed with Claude AI. SWOT analysis, market research, competitive analysis, and financial projection processes can be carried out together. It also creates a strong preparation ground for technopark applications and entrepreneurship competitions.

Freelancing and Additional Income Models

In areas such as content creation, translation, social media management, data analysis, and copywriting, service quality and production speed can be significantly increased with Claude AI. It is possible to reach an international customer base and create a sustainable additional income model through platforms like Fiverr, Upwork, and similar platforms.

Step-by-Step Methodology for Developing a Business Plan with Claude AI

In the traditional approach, preparing a business plan is a process that requires significant time and expertise. With Claude AI, this process can be completed within a few hours through a structured methodology.





SECTION 3

Claude AI for Recent Graduates and Professionals: Career and Entrepreneurship Strategies

For individuals at the beginning or middle of their corporate career journey, Claude AI serves as a powerful strategic tool both for improving performance in their current role and for building an independent business model. In a competitive business environment, the ability to differentiate and create value with artificial intelligence has now become a fundamental requirement.

Six Strategic Application Areas for Professionals



Optimization of Business Processes

Report preparation, corporate correspondence, meeting summaries, and presentation development processes can be significantly accelerated with Claude AI. A weekly gain of 5-10 hours in productivity creates valuable time for strategic priorities.



Startup and Side Project Development

In addition to a corporate career, it is possible to create independent income models such as digital products, consulting services, or content platforms. Claude AI provides strategic support at every stage, from idea generation to launch.



Career Development and Personal Branding

In processes such as promotion applications, interview preparation, industry analysis, and personal brand building, Claude AI offers a data-driven and strategic perspective. A systematic roadmap can be created to help you reach your career goals.



E-Commerce and Digital Sales Operations

Product descriptions, campaign copy, customer communication templates, and sales strategies can be developed with Claude AI. Managing e-commerce operations alone is now becoming a scalable model.



Content Creation and Thought Leadership

With Claude AI, content production capacity and quality can be significantly increased in formats such as blogs, podcast scripts, video content, and corporate newsletters. It is a powerful tool for strengthening a thought leadership position in the industry.



Independent Consulting Services

By combining sector expertise with Claude AI's research and analysis capabilities, it is possible to serve a much broader customer base as an independent consultant. Service quality and delivery speed can be increased at the same time.

Launching Your Own Platform or Company: The Removal of Entry Barriers

Ten years ago, building an independent digital platform, SaaS product, or service company often required an initial budget of **50,000-150,000 USD** for the first year, a core team of **3-8 people**, and **6-18 months** of intensive preparation. Critical work such as content production, legal research, marketing, market analysis, and software development was split across separate specialists. Today, Claude AI combines a large part of this work into a single workflow, dramatically lowering both cost and time barriers; as a result, entrepreneurship is shifting from a capital-intensive model to a more accessible and rapidly testable one.

Traditional Model (Before AI)

- Content writer: 3,000-8,000 USD per month
- Legal consulting: 200-500 USD per hour
- Marketing agency: 5,000-15,000 USD per month
- Business development specialist: 4,000-10,000 USD per month
- Market researcher: 2,000-5,000 USD per project
- Software developer: 5,000-12,000 USD per month
- Preparation time: 6-18 months
- Total first-year cost: 100,000+ USD

Today's Model with Claude AI

- Content: Claude produces it, you guide it — ~20 USD per month
- Basic legal information: Claude researches, lawyers handle only the critical points — 80% savings
- Marketing copy: Claude develops it, suggests A/B tests — In-house
- Business strategy: Claude analyzes, performs competitor research — In-house
- Market research: Claude compiles, reports, and recommends — In-house
- Technical infrastructure: No-code tools + Claude guidance — 50-200 USD per month
- Preparation time: 1-4 weeks
- Total first-year cost: 500-3,000 USD

Speed Advantage

The traditional 12-month process now drops to 2-4 weeks. Market opportunities can be addressed much faster.

Cost Efficiency

Up to 95% cost reduction minimizes the risk of failed attempts. Multiple business models can be tested in parallel.

Scalability

A solo team can reach the productivity of a 10-person team with Claude AI. The need to hire more people for growth disappears.

This transformation is not only about cost savings, but also about the democratization of entrepreneurship. Now, the success of a startup depends not on the capital available, but on the individual's vision, determination, and how effectively they use Claude AI. The window of opportunity is open — and for those who move early, the advantage grows exponentially.

Platforms and Business Models You Can Build: High-Potential Opportunities

Below is a curated list of business models that stand out in terms of accessibility and growth potential:

Online Education Platform

Your area of expertise can be turned into a course. With Claude AI, curriculum design, lesson content, exam questions, and assessment materials can be created. A global student audience can be reached through Udemy, Teachable, or Kajabi. A successful course can eventually become a source of passive income.

Claimed Success Example: A single niche course can generate passive income for years. Some content creators prepared their first course in 48 hours and put it on sale the same week.

Content and Copywriting Agency

An agency that produces blog posts, social media, email newsletters, and corporate content can be built. With Claude AI, your production capacity can increase by 5-10x. You can start with a single client portfolio; referrals will accelerate your growth. Clients can be acquired through Upwork, Fiverr, or direct sales.

Why Now? Solo agencies can reach the production speed of large teams with Claude AI. The first client usually comes from your immediate network.

AI Consulting

Consulting services can be offered to SMEs and enterprise businesses on integrating AI tools into their workflows. You can analyze which processes can be automated, prepare an implementation roadmap, and provide team training. Expert supply in this field is still limited, while demand is increasing exponentially.

Why Now? 70% of companies do not know how to use AI. This gap opens a major window of opportunity for individual consultants.

Niche E-Commerce

An e-commerce store focused on a specific market segment can be built. With Claude AI, product research, SEO-focused product descriptions, ad copy, and customer service templates can be created. You can start at low cost with Shopify or Etsy; drop-shipping or print-on-demand models allow sales without inventory risk.

Claimed Success Example: You do not have to compete in a broad market. A narrow niche means less competition and more loyal customers.

Digital Media Brand

A community can be built around a specific topic in the form of a podcast, YouTube channel, or weekly newsletter. With Claude AI, content calendars, scripts, show notes, and social media posts can be produced. It can be monetized through ads, sponsorships, and memberships. As the community grows, brand value compounds.

Claimed Success Example: Community is one of the strongest business models. A small but engaged audience is far more valuable than a large but indifferent one.

SaaS Product Development

Even without technical infrastructure knowledge, product ideas can be developed with Claude AI and brought to life using no-code tools (Bubble, Webflow, Glide). Claude guides you on user stories, feature lists, pricing strategy, and marketing copy. You can start small, validate with the first 10 customers, and scale from there.

Why Now? Thanks to no-code tools, technical knowledge is no longer a requirement. Idea quality and user understanding have become more valuable than code.

Personal Brand and Coaching Services

You can position yourself as an expert in a specific field and offer one-on-one coaching, group programs, or mentoring services. With Claude AI, personalized content plans, exercises, assessment tools, and client reports can be prepared. Authority can be built through LinkedIn and social media. The first step is to define a single niche and a clear transformation promise.

Claimed Success Example: People want access not to information, but to someone they trust. Personal branding is one of the most sustainable business models.

Translation and Localization Agency

Using Claude AI's multilingual capabilities, content translation and localization services can be offered. This is not just word-for-word translation; cultural adaptation, SEO optimization, and brand voice consistency can also be provided. It is an indispensable service for companies aiming to enter global markets. You can start by selecting high-demand languages and sectors.

Why Now? As the content world becomes more global, demand for localization is growing rapidly. The combination of a language speaker and AI user is still rare.

Research and Reporting Services

A service can be built to prepare industry reports, competitive analyses, market research, and investor summaries. With Claude AI, data collection, synthesis, and reporting processes can be accelerated. Startup companies, investors, and enterprise clients allocate high budgets to these services. Choosing a niche area of expertise strengthens your proposals.

Claimed Success Example: Decision-makers buy time. A well-prepared report replaces hours of research, and high budgets are allocated for it.

The common features of these business models are low startup costs, rapid testability, and scalability with Claude AI. Whichever model is chosen, the most important step is winning the first customer. The rest takes shape through experience.

Idea Development Methodology: Structured Brainstorming with Claude AI

Many individuals avoid taking action because they believe they do not have a strong business idea. In reality, someone who knows how to ask the right questions can use Claude AI to create a personalized and actionable portfolio of business ideas within a few hours. The methodology below is designed to take you from zero to your first concrete step.

01

Self-Assessment and Resource Mapping

Understanding yourself is the foundation of choosing the right business model. At this stage, the following questions should be answered:

What topics do people ask you about? How many hours per week can you dedicate? What is your starting budget? Do you want to work remotely or locally?

Example Claude prompt: "Create a self-assessment form for me. Help me systematically map my competencies, interests, time and budget constraints, and risk tolerance."

Expected output: Personal competency map, list of available resources, risk profile.

02

Problem and Opportunity Identification

The best business ideas are born from real problems. At this stage, you can analyze the problems you observe around you, the needs people are willing to pay for, and the areas that are still not well solved, together with Claude.

Example Claude prompt: "Analyze unmet needs and growing market gaps in the following sectors [sector name]. Explain with concrete examples how individual entrepreneurs can fill these gaps."

Expected output: List of 10-15 problem areas, estimated market size for each, and an assessment of competitive intensity.

03

Building and Filtering an Idea Portfolio

Claude generates personalized business ideas by combining the defined competencies and problem areas. In this stage, quantity matters — first, a broad pool of ideas is created, then narrowed down with filtering criteria.

Example Claude prompt: "Based on my competencies [list] and these problem areas [list], suggest 15 business ideas that can be implemented with 10 hours per week and a \$500 startup budget. Score each idea from 1-10 for ease of start, growth potential, and competitive intensity."

Expected output: Ranked business idea list, detailed summary of the 3 most promising ideas.

04

Market Validation and Competitive Analysis

For the selected 2-3 ideas, a deep market analysis is conducted. This stage is the most critical before moving forward — it protects you from wasting time and money on the wrong idea.

Example Claude prompt: "Conduct a comprehensive market analysis for [business idea]: Who is the target audience? Who are the current competitors and what are their weaknesses? What angles can be used to differentiate this idea? What is the most effective channel for acquiring customers in the first 3 months?"

Expected output: Competitive map, target audience profile, differentiation strategy, first customer acquisition plan.

05

First 30-Day Action Plan

Once the analysis phase is complete, it is time to take action. At this stage, abstract goals are turned into concrete daily and weekly tasks.

Example Claude prompt: "Create a detailed first 30-day action plan for [selected business idea]. Define 3-5 concrete tasks for each week. What should the minimum viable product (MVP) be to win the first customer? What tools do I need and what is the total startup cost?"

Expected output: Weekly task list, MVP definition, tools and cost list, first customer acquisition target.

✔ Practical Tip: It is possible to complete this entire methodology in a single Claude session. With an average of 2-3 hours of focused work, you can arrive at an actionable business plan from scratch. The only thing needed to start is asking the first question.

Roadmap Development: From Strategic Goal to Actionable Plan

The most critical step in bringing a startup idea to life is transforming abstract goals into concrete and measurable actions. Claude AI offers extraordinary structuring capacity in this process.

Example Request You Can Give Claude:

"I want to build an online education platform. I don't have a software development background, my initial budget is \$1,000, and I can dedicate 10 hours a week. Create a 3-month roadmap for me, broken down into weekly tasks."

Based on this request, Claude produces:

- Weekly prioritized task lists
- Suggested tools and platforms to use
- Potential risks and mitigation strategies
- Success metrics and key performance indicators
- First customer acquisition strategy

The Value of a Structured Roadmap

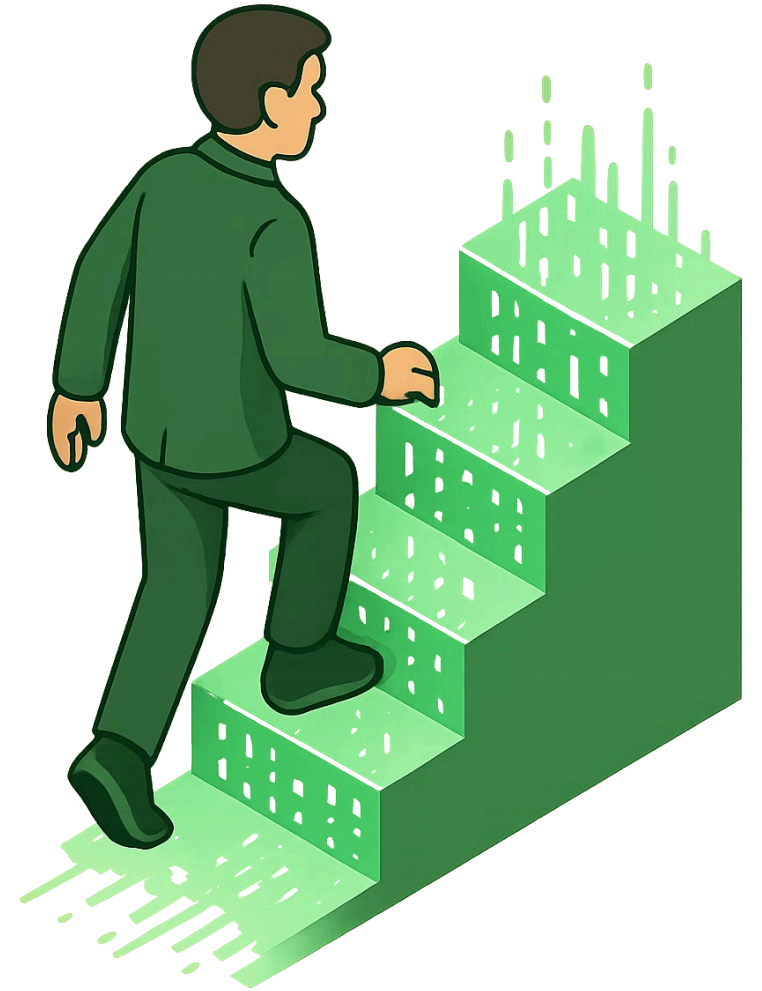
A clear roadmap is the most powerful mechanism for sustaining motivation. Knowing what to do each day significantly reduces the tendency to give up in the face of uncertainty.

Roadmaps created with Claude have the following advantages:

- Realistic and actionable timelines
- Steps adapted to available resources
- Flexible and updateable structure
- Recommendations supported by domain knowledge

The most critical obstacle is not a lack of information, but the decision not to take action.

Claude AI has largely eliminated the barriers of information and resources. The only variable left is the individual's own decision.



Opportunity Equality: The Democratizing Role of Artificial Intelligence

Many talented individuals living in America face structural barriers such as high-cost education programs, consulting fees, and limited professional networks. For immigrant communities, these barriers are often even more pronounced. Claude AI minimizes the economic and social constraints in front of individual potential by removing the vast majority of these obstacles.



Claude AI's Contribution to Equal Opportunity: Four Core Dimensions

Accessible Pricing Model

Claude AI's free version has sufficient capacity to get started. The paid plan is positioned at a highly competitive price point compared with the cost of traditional consulting or tutoring services in the United States. Access to a world-class strategic thinking partner is possible at a low monthly cost.

Compensating for the Lack of a Professional Network

The 'I don't know anyone, I have no connections' mindset is now losing its relevance. With Claude AI, high-quality business plans, content, and strategies help prepare an individual for opportunities. Quality and competence can often take the place of a professional network.

Geographic Independence

Being in New York, Los Angeles, or a major city is no longer a decisive advantage. From any state in America, it is possible to access the same tools and quality of support as competitors in major metropolitan areas. Geography is no longer a defining constraint.

Language and Cultural Bridge

Working in a bilingual environment can create both advantages and challenges. Claude AI can produce content in both Turkish and English; it helps you develop correspondence, applications, and strategies that are aligned with American business culture. The bridge between two cultures can become a competitive advantage.

Effective Prompting: Getting Maximum Value from Claude AI

The quality of the output obtained from Claude AI depends largely on how the question is formulated. This skill, called "prompting," is something that can be learned and improved.

Poor Prompt Examples ❌

- "Give me a business idea"
- "Write something"
- "How should a good CV be prepared"
- "How can I generate income"

These kinds of requests are overly broad. Claude produces a response; however, it does not address the individual's unique situation.

Effective Prompt Examples ✅

- "I am 23 years old, have a graphic design education, live in New York, and can devote 15 hours a week. Suggest 5 freelance work models; evaluate the competitive intensity and starting income potential of each."

i Core Principle: The more comprehensive context you provide to Claude, the more personalized and actionable the outputs become. Clearly state your current situation, constraints, goals, and preferences.

Five Concrete Steps to Get Started: Apply This Week

01

Sign Up for Claude.ai

Go to claude.ai and create a free account. The registration process takes less than five minutes. Start your first session and begin exploring the platform's capabilities.

02

Run Your First Structured Brainstorm

Start with a prompt like, "I have experience in these areas / I am interested in these topics — suggest 10 business models within this framework." Review the generated list and identify the 2-3 ideas that excite you the most.

03

Deepen the Chosen Idea

For the idea you selected, ask Claude for market analysis, competitive assessment, and initial steps. At the end of one hour of work, you will have a concrete and actionable framework.

04

Create a Roadmap

Develop a structured action plan with a prompt like, "Create a weekly task plan to bring this project to life in 3 months." Save this plan and track it regularly.

05

Take the First Concrete Step This Week

Complete the first task in the roadmap. It could be opening a social media account, purchasing a domain, or creating the first piece of content. Small but real progress is critical for maintaining motivation.

Working Proficiency with Artificial Intelligence: Core Skill Set

Using Claude AI requires a methodology that goes beyond simple question-and-answer interaction. Users who achieve the highest value develop a specific work discipline and skill set. The essential elements of this methodology are summarized below:



Prompting

Asking the right question



Iteration

Giving feedback to improve responses



Critical Thinking

Questioning and validating AI output



Integration

Combining AI output with your own work



Automation

Delegating repetitive tasks to AI



Continuous Learning

Keeping up with AI's new features

Developing these competencies takes time; however, the return becomes apparent quickly. Individuals who work with Claude AI for a few months can complete processes that used to take hours in just minutes.

Artificial Intelligence Revolution: Projected Development Trajectory

Artificial intelligence technology is still in the early stages of its development. The transformations expected in the coming years further increase the strategic importance of the positioning decisions made today:

2024–2025

Full integration of AI assistants into work processes. Individual use is rapidly becoming widespread; AI tools are becoming an integral part of standard workflows.

2028–2030


AI-supported entrepreneurship is becoming the norm. **One-person structures can reach the capacity of large teams with AI.**

2026–2027

The widespread adoption of autonomous AI agents. Systems that independently take on tasks such as research, code development, and process management are being integrated into the business world.

2030+

Business models without AI integration become unable to compete. **Sustainable competitive advantage will belong to those who start today.**

 Strategic Note: Those who adopt AI will progress much faster. This difference is growing every day. The step taken today is worth far more than the step taken tomorrow.

Frequently Asked Questions: Transparent Answers About Claude AI

Honest and objective answers are provided to the most common questions and misconceptions about Claude AI:

Does Claude AI always generate correct information?

No. Claude AI can sometimes produce incorrect or fabricated information (hallucination). For this reason, independent sources must be used to verify Claude outputs for critical decisions. Claude is a powerful tool; however, the final decision and responsibility always belong to the user.

Does artificial intelligence threaten existing job positions?

Artificial intelligence will transform some job definitions; however, it will also create new business models and opportunities. The deciding distinction is this: **Those who use artificial intelligence effectively will get ahead of those who do not.** The positioning decision should be made today.

Is technical infrastructure knowledge necessary?

Absolutely not. Claude AI works entirely through a natural language interface. It is possible to ask in Turkish and receive responses in Turkish. **No technical knowledge or software development experience is required.**

Is a paid subscription mandatory?

No. The free version has sufficient capacity to get started. A paid plan can be considered when the need for more intensive and advanced use arises. However, it is recommended to begin with the free version at the first stage.

Creating Value with Claude AI

Let's summarize the core framework covered in this presentation. Claude AI's strategic value proposition and application areas for individuals:



Idea Development

Generates realistic and actionable business ideas tailored to an individual's skills and resources.



Strategic Roadmap

Transforms abstract goals into concrete weekly tasks and measurable steps.



Content and Text Production

Collaboratively develops all kinds of corporate text, strategy documents, and presentation materials.



Efficiency and Capacity Increase

Compresses processes that take hours into minutes; significantly increases individual capacity.



Equal Opportunity

Provides world-class support to everyone, regardless of economic and geographic constraints.



Competitive Advantage

Those who use AI effectively are achieving a clear strategic advantage over those who do not.

"The most effective way to predict the future is to build it yourself."

Alan Kay



This presentation prepared by

CibaStartups.com



This presentation was prepared by CibaStartups.com.

© 2026 CibaStartups.com.

Disclaimer: The information in this presentation is provided for general informational purposes only. CibaStartups.com makes no warranty as to the accuracy, timeliness, or completeness of the information in the presentation. The statistics and data in the presentation are based on third-party sources and are recommended to be independently verified.

About Artificial Intelligence Tools: Claude AI referenced in this presentation is a product of Anthropic PBC. CibaStartups.com is not affiliated with Anthropic and has no partnership, sponsorship, or affiliate relationship with it. All mentioned trademarks belong to their respective owners.

Income and Success Examples: The income figures and success scenarios in the presentation are for illustrative purposes only and individual results may vary. CibaStartups.com does not guarantee any income or success.